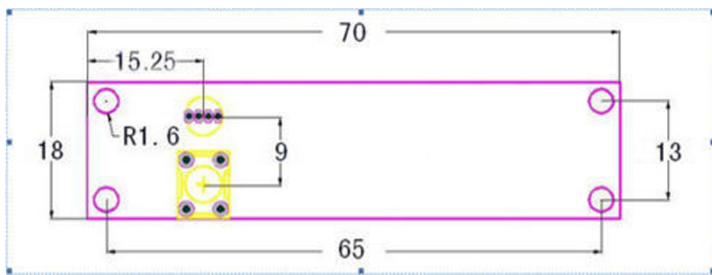


WIRELESS DMX PCB DRILLING TEMPLATE



WHEN DRILLING MOUNTING HOLES REQUIRED:

- USE A 3MM BIT FOR 4X CORNER PCB MOUNTS
- USE A 4MM-4.5MM BIT FOR THE PUSH SWITCH
- USE A 5.5MM-6MM BIT FOR THE LED INDICATOR

RECOMMENDED PCB STANDOFF MOUNTS LENGTH: 6MM

**TEMPLATE CREATED & DISTRIBUTED FREE
BY NATHAN PH - WWW.NPH-NETWORK.CO.UK**